

SAW CUT
RELEIF JOINTS
MADE WITHIN
24HRS OF POUR
1-1/2" DEPTH,
10' O.C. TYP.
NOTE: REBAR TO
EXTEND THROUGH
SAW CUT JOINTS

PIER -
12" DIA. X 36" DEPTH
CAST IN PLACE CONCRETE
4000 PSI MIN.
MONOLITHIC POUR WITH SLAB

4" DEPTH X 12" WIDTH
PERIMETER SLAB OR
4" DEPTH FULL SLAB CAST IN PLACE;
18" MAX. GRID, #3 REBAR OR EQUIVALENT
REMESH. MONOLITHIC POUR WITH PIER.

OPTIONAL: FULL SLAB

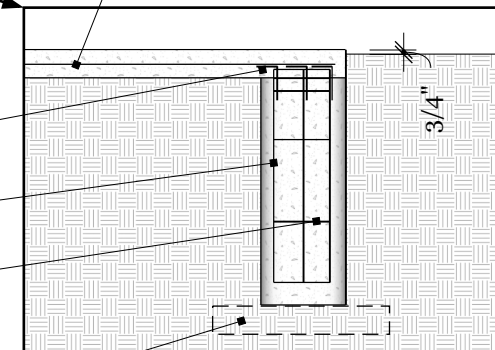
PIER REBAR:

3 #3 L REBAR CORNERS
TIED OR WELDED
TO CONNECT
PIER VERT. REBAR
TO SLAB REBAR

3 #4 VERT. REBAR
PER PIER

#3 REBAR
HORIZ. TIES
AT 10" O.C. TYP.
W/ 3 IN TOP 6"

PAD: #3 REBAR, 18" GRID TYP



FOUNDATION ELEVATION DETAIL

OPTIONAL: SPREAD FOOTING (FOR LOW BEARING SOILS)

NOTES

1. Verify all concrete dimensions with manufacturing requirements.
2. Concrete between piers does not extend to frost depth. Frost heave may occur. AWG takes no responsibility for potential frost heave.

PROJECT #	KF	DATE	REV.	DESC.	DATE	BY	APVD
DRAWN	JAMES ROBERTS	00000	1				
APVD	MNGR	00/00/0000	2				
			3				
			4				
			5				
			6				
			7				



12' X12' GREENHOUSE FOUNDATION

12' X12' GREENHOUSE

PG.

1/1

DO NOT SCALE

ALL DIM. IN FT & IN.